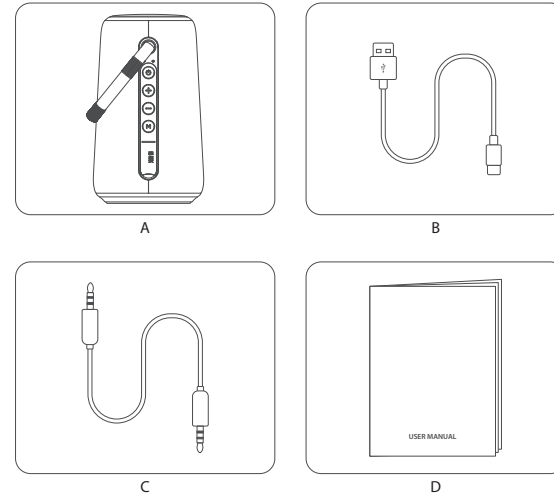


SXL4090 MANUAL

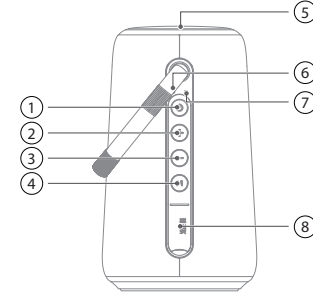
BLUETOOTH SPEAKER AND ACCESSORIES

- A: Bluetooth speaker
- B: Type-C cable
- C: AUX audio cable
- D: User manual



01

BASIC FUNCTION



- ① Long press for 2 seconds: Power on/Power off;
Short press one time: Play/Pause; Pick up /Hang up the phone
Double press: Protect call privacy /Reject incoming calls
- ② Short press one time: Control the volume up"+
Long press for 2 seconds: Next song
- ③ Short press one time: Control the volume down"-"
Long press for 2 seconds: Last song
- ④ Short press: Sound mode switching
Long press for 2 seconds: TWS connect / disconnect
Short press 2 times: Disconnect Bluetooth
Short press 3 times: Reset factory settings
Short press: light mode switching
Long press for 2 seconds: Turn on /off light
- ⑤ Calling MIC
- ⑥ Status indicator light: White(BT),
Green(AUX), Red (Charging & lower battery)
- ⑦ Type C:
AUX: Charing port (support upgrade)
3.5 audio input port
- ⑧

02

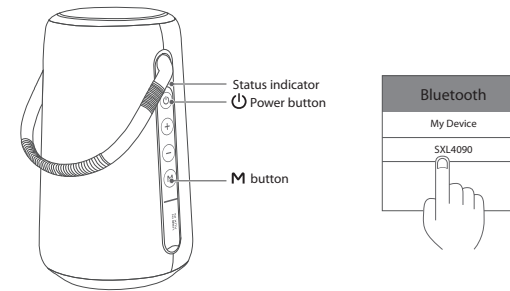
OPERATION GUIDE

1. Power on/off

Long press " "for 2 seconds for power on, pressing again for power off.

2. Bluetooth Mode

Power on, auto turn to Bluetooth mode, white light indicator light is flashing. Open your mobile device, search "SXL4090" Bluetooth name. You'll hear prompt tone once it is connected and the white indicator light keeps on. Then display the music. Short press " "button 2 times, Bluetooth disconnected. Short press " "button 3 times, reset factory settings.

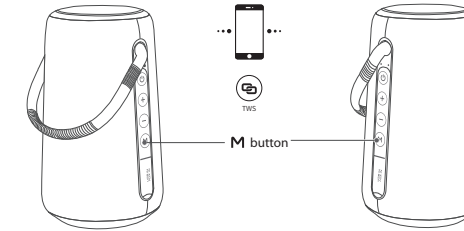


04

OPERATION GUIDE

3. TWS Connection Function

Bluetooth speaker supports the TWS interconnect function. Under power-on status, Click " " button of each Bluetooth speaker and turn to TWS pairing. There will be a voice prompt for successful pairing. The sub-master model's indicator light keeps on and the master model's indicator light is flashing. At present, copy the process ②. When connected, you can enjoy the favorable music via various sounds channel.



4. Volume Control

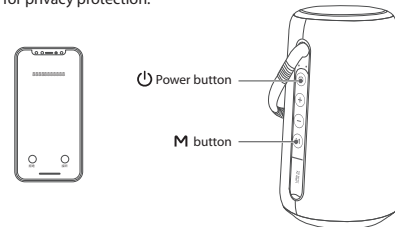
Press " " button to turn up the volume, press " " to turn down the volume. When the volume to maximum, there have tone.
• Last song and Next song control :
Under Bluetooth mode, long press " " for next song, long press " " for last song.
• Under BT status:
Under Bluetooth mode, press " " button to enter pause music status, press again recover music play status; Under AUX audio mode, short press one time " " to silent mode, press again to cancel the silent mode.

05

OPERATION GUIDE

5. Speaker Phone

Under Bluetooth connected status, when using the mobile phone to make a call, the speaker will automatically enter the Bluetooth hands-free calling. When a call coming in, press the button " "to answer the call, press again " "to hang up the call; On speaker phone status, when there is a call coming in, press twice to reject the calling; On hands-free status, press button " "2 times" to switch the calling for privacy protection.



6. AUX Music Display

This product supports AUX music display, plug in the AUX audio cable, automatically switch to AUX audio input mode. At this point, connect the audio device to play music through the AUX cable.

7. LED Lighting Mode

This product supports 8 magic LED lighting effects. Long press the touch part on the top of the speaker for 2 seconds, turn on mode 1 (white illumination mode)(in illumination mode, touch twice in a row to adjust the brightness of the illumination light) Short touch move to the next mode, (mode 1-mode 2-mode 3-mode 4-mode 5-mode 6), Press and hold again to close.

8. EQ Mode

This product supports Balance Bass, sound mode. Short press " "button to switch the mode. Default the Balance Mode.

06

OPERATION GUIDE

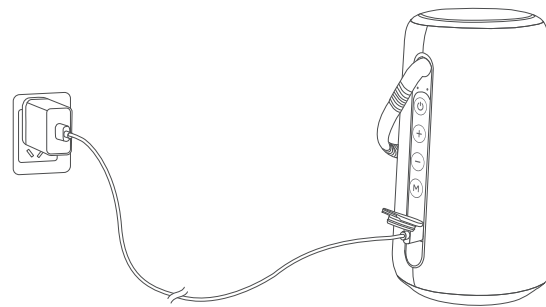
9. Power Saving

The product will automatically shut down to save power under the following conditions: In Bluetooth mode, waiting for 10 minutes without connection, the product will automatically turn off, please long press " "button for 2 seconds to power on again.

10. Charging/Power Supply

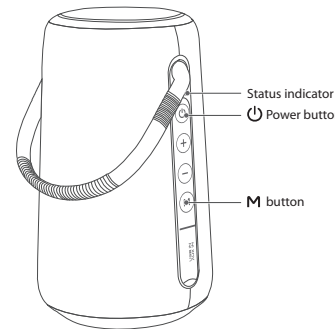
Important note:

- Do not use power adapters without safety certification.
 - It is recommended to use a power adapter with an output of more than 5V/2A for charging.
1. When you hear the low battery prompt tone, please charge the speaker as soon as possible.
 2. When charging, the charging indicator light is red, and the indicator light would disappear when fully charged.



07

FUNCTION GUIDE



Power on	The white indicator light is on when power on, and automatically enter to the Bluetooth mode (Default); The white indicator light flashing quickly (in searching status for Bluetooth devices).
AUX	Plug in the AUX audio cable, the indicator light is in green. The white indicator light is on when Bluetooth connected.
Bluetooth status	Beyond the Bluetooth connection range, the status indicator keeps flashing quickly. Disconnected (in searching status).
Maximum volume	There have prompt tone when in maximum volume
Charging status	When charging, the charging indicator light is red, and the indicator light would disappear when fully charged.
Low battery	When low battery capacity, the charging indicator light is flashing.

08

SPECIFICATIONS

Product Name	SXL4090
Bluetooth Version	5.0
Battery Capacity	7.4V/2000mAh
Playing Time	6-8 hours (50% Volume)
Talking Time	4-5 hours
Charging Time	3-4 hours
Charging Current	5V = 2A
Speaker Unit	15W x 2
Product Size	184 x 114 x 114mm
Product Weight	800g±50

09

FREQUENTLY ASKED QUESTIONS

Q1: What kind of charger should we use for the speaker?

A: All common USB chargers can be used, while we suggest the ones 5V/2A or above 2A.

Q2: How to do if there is noise or discontinuous sound during playing?

A: The speaker can be normally used within 10m under no obstruction environment. If it is beyond 10m or with obstruction, there might be noise or discontinuous sound.

Q3: Why the speaker power off automatically after power on but no Bluetooth disconnection ?

A: When there is no bluetooth pairing in 10 minutes, the speaker will shut down automatically to reduce power consumption.

Q4: Why does the speaker cannot connect the once-paired cellphone?

A: First, remove the speaker's paired name from the cellphone's Bluetooth List and then restart pairing.

Q5: The speaker cannot be started up in a normal situation.

A: Please plug in the charger and try in a few minutes or try to long press power button 10-30s to reset.

10

FREQUENTLY ASKED QUESTIONS

Notes:

1. Please read this manual carefully before use and keep it properly.
 2. For the first use, please fully charge the product.
 3. Pls use certificated adapter that has passed national safety certification.
 4. If you do not use the product for a long time, be sure to charge it once within a month at least to maintain its performance.
 5. Do not use this product in an extremely cold or hot environment, such as temperature beyond the range of 5 C ~35 C. If use it beyond the above range, the product may stop automatically to protect the internal circuit.
 6. When charging it in a high temperature environment, the product may automatically stop charging to protect the battery. At this time, the charging indicator usually flashes quickly to indicate that the charging environmental temperature or the product internal temperature is too high.
 7. Storage environment temperature: -5 ~ 35 C RH < 70% (recommended 25 C ±5).
- Important safety instructions:**
1. Do not disassemble or repair this speaker personally, otherwise it may cause product damage or personal injury.
 2. Do not use it in dusty, humid, dry, and high-temperature environment.
 3. Do not place this product near a heat source, or a place with direct sunlight, a lot of dust, or mechanical vibration.
 4. In order to reduce the risk of fire, please do not cover this product with newspapers, tablecloths, curtains etc. during use.
 5. If the product has a waterproof feature, please do not exceed the nominal parameter range when using it.
 6. When the product is damaged (such as the power cord or plug is damaged, liquid enters or objects fall into the device, unable to operate normally or falls), it must be repaired.
 7. When the product is fully charged, do not connect it to the charger for further long time charging.
 8. The maximum ambient temperature should not exceed 40°C.

*This speaker supports mobile phones/ tablets/ PCs etc. Here this User Manual is illustrated base on mobile phones.

11